



Nationaal Coördinatie Centrum Rampenbeheersing

Disaster Risk Management in Suriname

The Role of the NCCR in promoting and integrating
DRM across sectors in Suriname

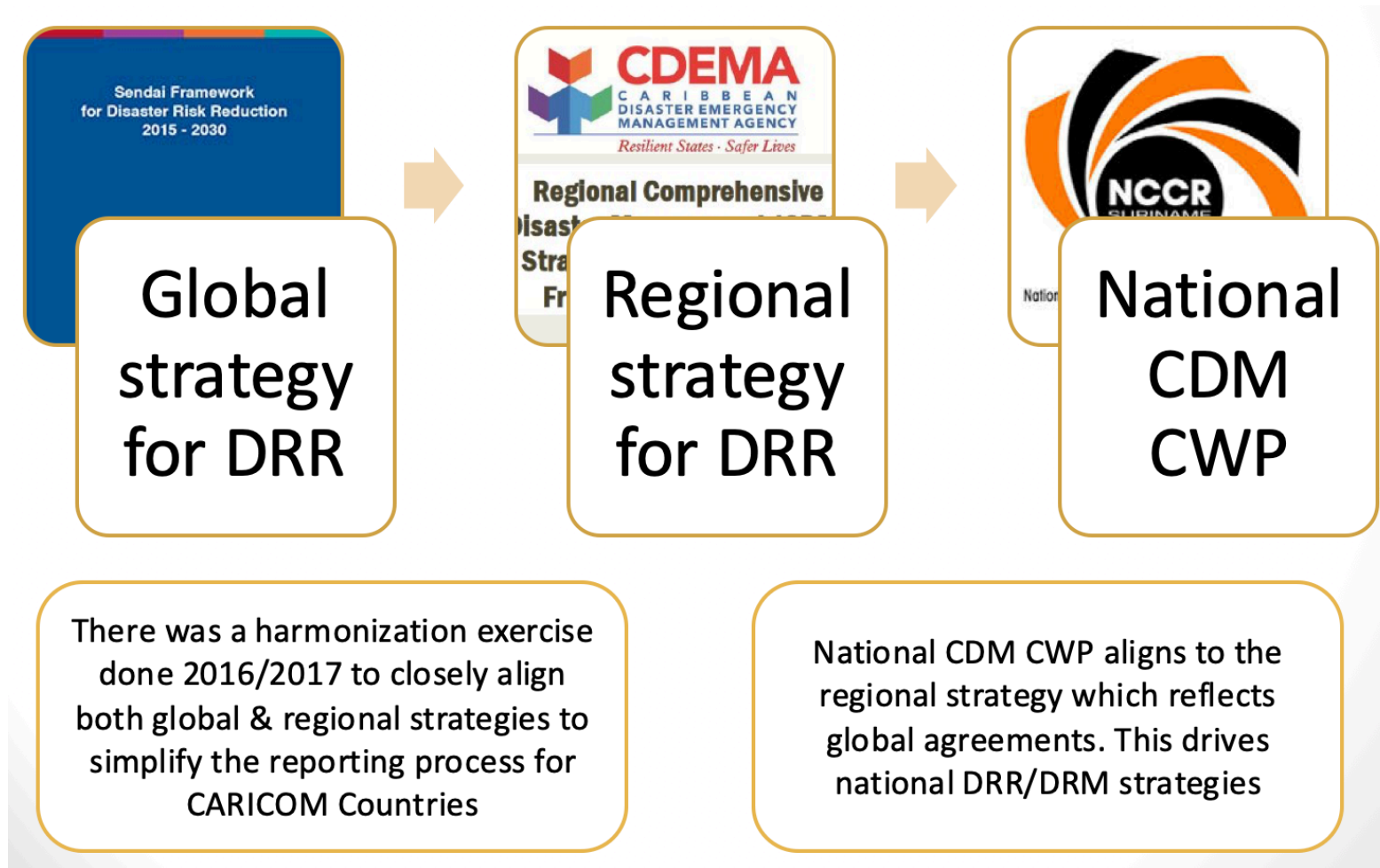
6 november 2018

Col Jerry
Slingard

Outline of Presentation

- A look at the **strategic framework** that provides an overview of DRM in the Caribbean (CARICOM States)
- Description of the **operationalisation** of the regional approach to fit within the national context
- A look at **current activities** that is advancing the integration of DRM nationally and locally

Strategic Framework for DRM



Operationalisation or adaptation of regional efforts

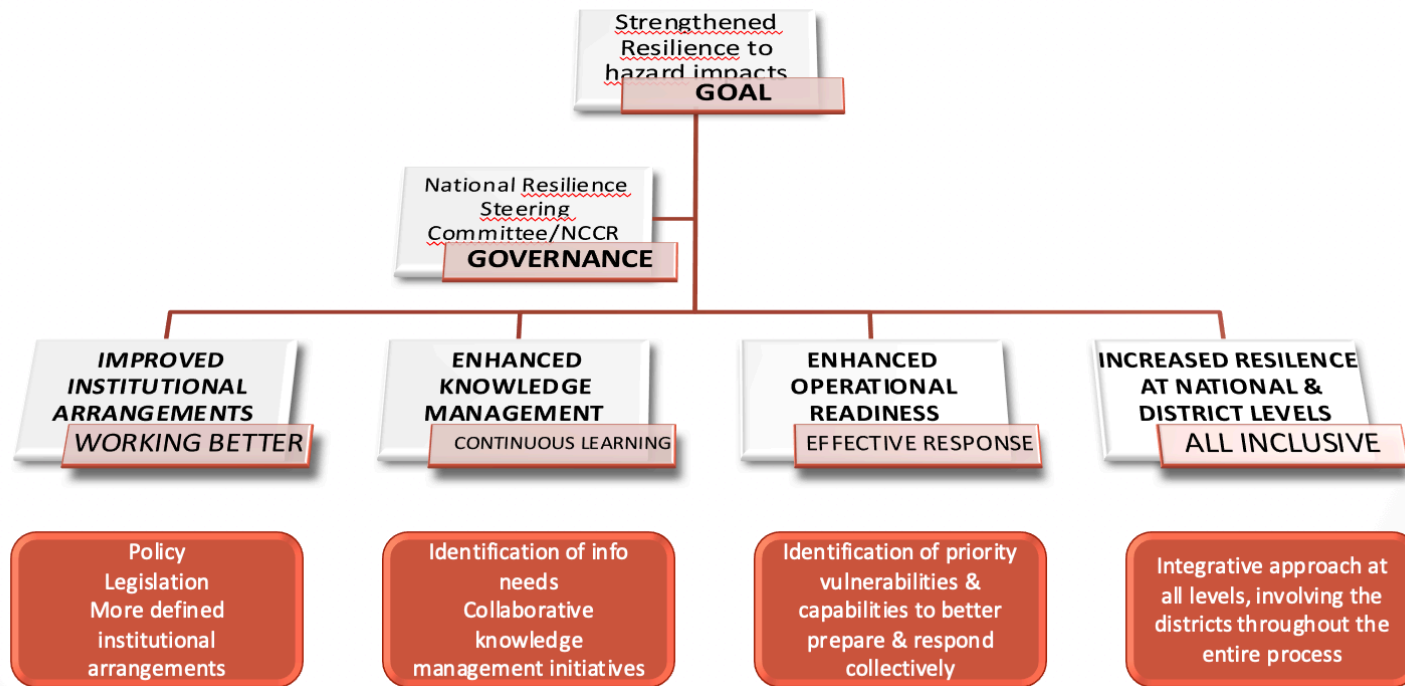
High level meetings to sign off on approach

Several multi-stakeholder meetings

Development of overarching strategic document

The National Approach to DRM

The driving philosophy to informing this strategy is to increase resilience for the whole of Suriname



Where are we today?



Draft legislation
CWP timeframe extended
Regular meetings with the
government, development
partners & NGO community



Continue to provide response
to events
Continue to build capacity in
collaboration with our
development partners
Continue to participate in
global & regional platforms



Together with the UNICEF we
are fulfilling a major
international & regional goal –
Improving Risk Knowledge at
the national and district levels

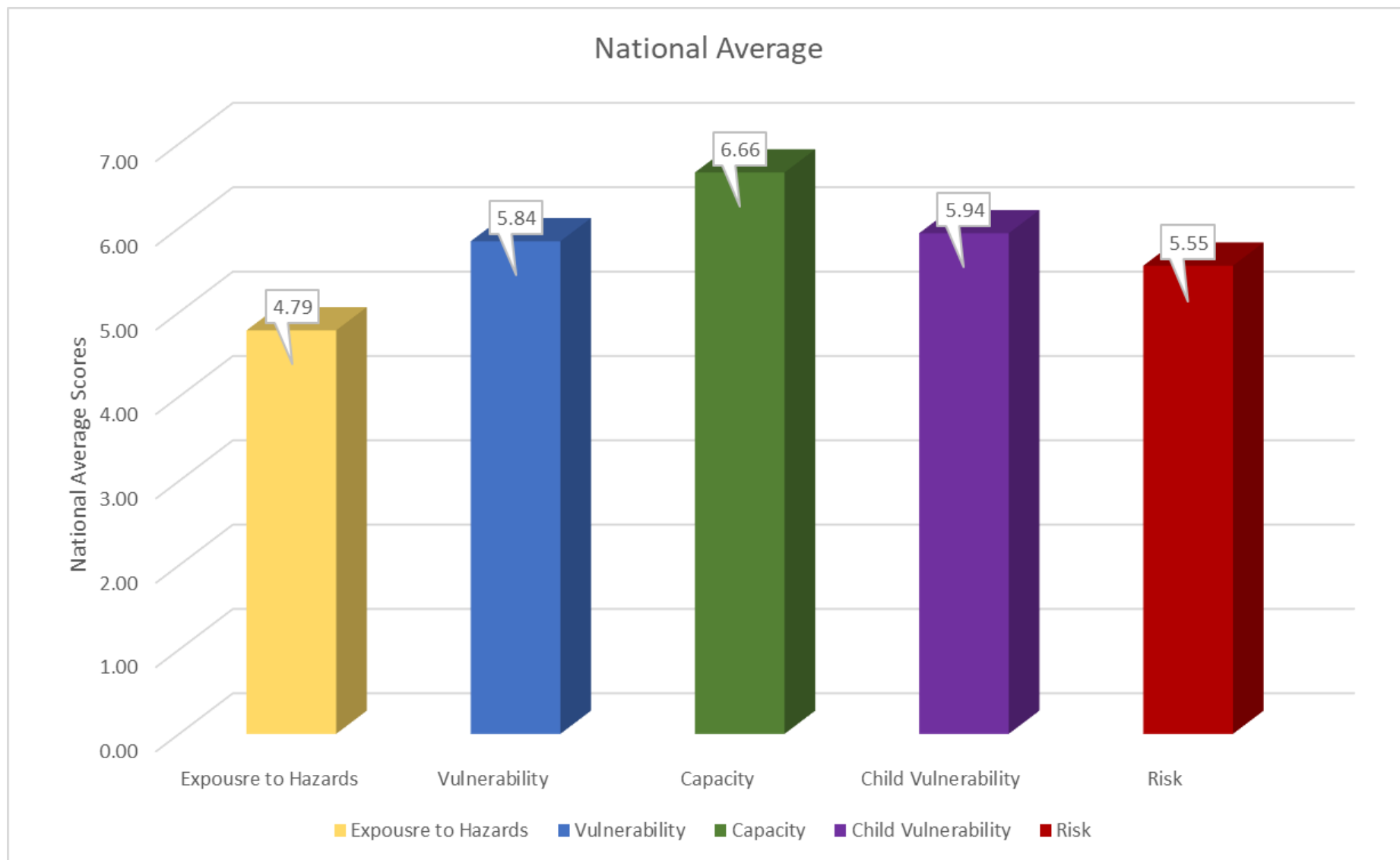


CCRIT application in Suriname

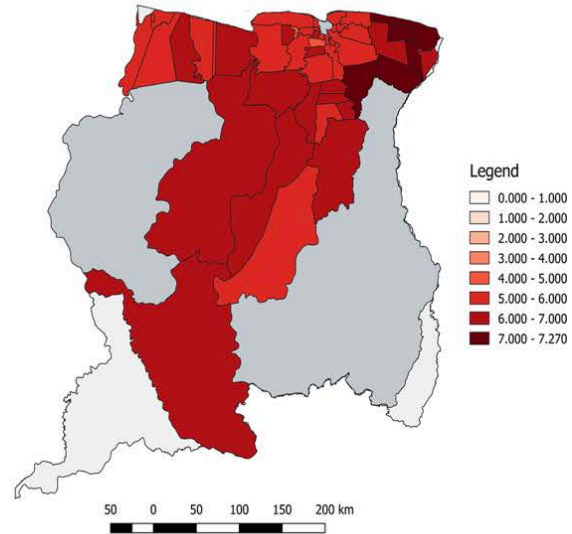
- First Participating State in the CDEMA system to advance the application of the CCRIT – we have one district to complete
 - This application incorporated child-inclusive indicators
- Documenting our process inclusive of utilising the risk information to inform our programming ; intend to make the information readily available to allow for common understanding of risks
- Have used an all-inclusive approach with the involvement of multiple stakeholders – government, NGO

Some initial products from the application of CCRIT

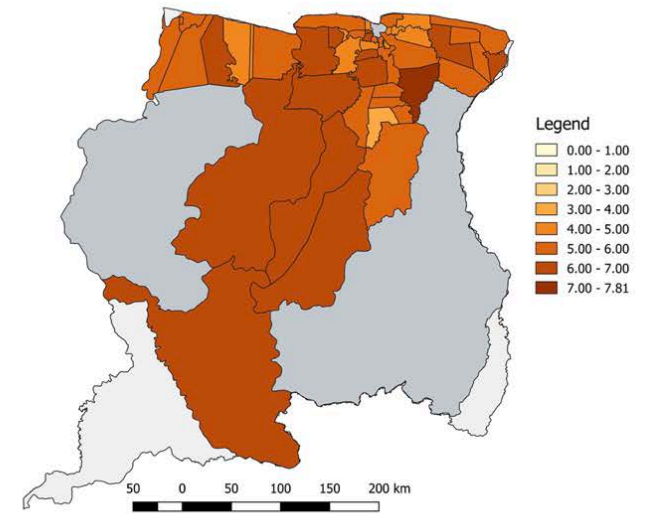
- CCRIT has been applied to nine of the 10 districts



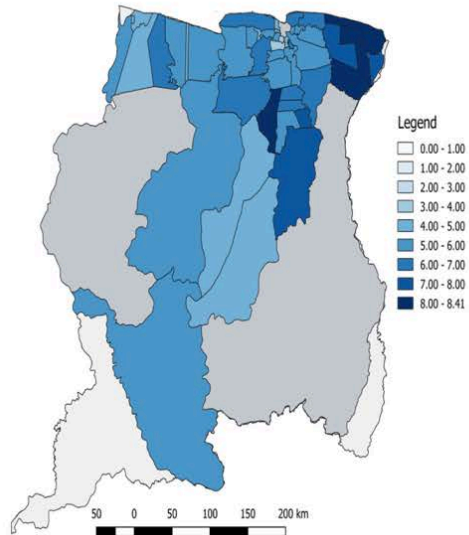
MAP OF SURINAME SHOWING DISTRICTS AND CORRESPONDING RISK INDICIES



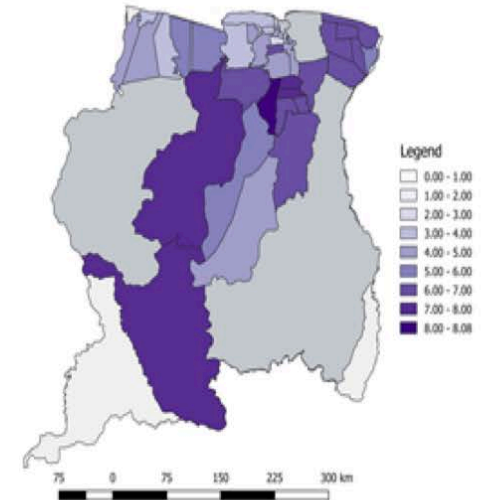
MAP OF SURINAME SHOWING RESSORTS AND CORRESPONDING RISK INDICIES



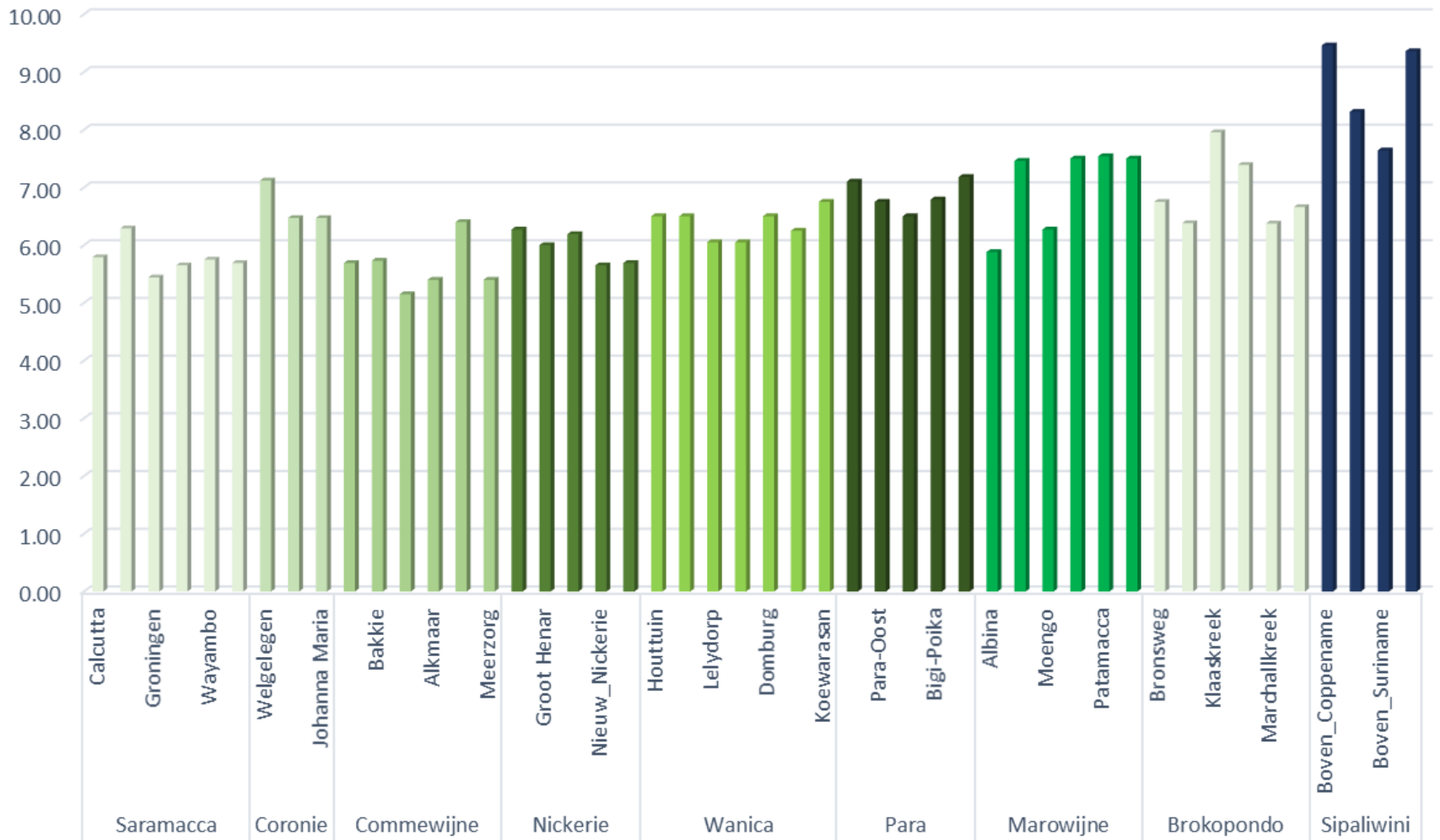
MAP OF SURINAME SHOWING DISTRICTS AND OVERALL VULNERABILITY INDICIES



MAP OF SURINAME SHOWING DISTRICTS AND CORRESPONDING CHILD CENTRED VULNERABILITY INDICIES



Capacity Profile Scores by District and Ressort



Next Steps

- Work closely with the UNICEF and CDEMA to complete the process
- Utilise risk information to complete risk profiles and disaster management plans
- Promote the use of the CCRIT platform to generate evidence to influence decision-making